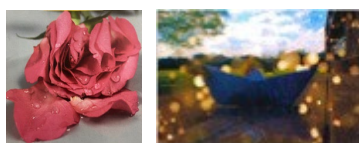


Art and Design

The Art Department delivers a broad and rigorous curriculum that exceeds the breadth and depth of the national curriculum. It is designed for students to gain substantive practical, theoretical and disciplinary knowledge. It ensures all students reach their full potential, become independent and take intelligent risks in a fully supportive environment. It seeks to challenge, motivate, and cultivate a love for Art and Design, whilst encouraging further thinking beyond classroom study.

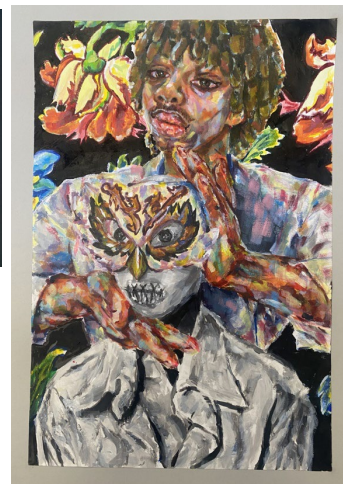
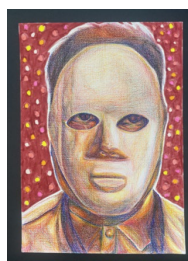


Teaching and learning are delivered by our specialist team with adapted resources to meet individual needs. It is deliberately planned to build on previous learning to support students to accumulate knowledge overtime. Sufficient practice is encouraged to ensure students develop receptive and productive expertise. The department has three fully equipped Art rooms, ceramics area, dark room and a designated 6th form area. We listen to students, are aware of current employment trends and provide them with the necessary support to succeed. They are taught how to respond to, and interpret visual imagery through artist studies, observation and imagination with a wide range of mediums. Artists, designers and craftspeople from a variety of cultures and eras studied are carefully selected to match the demographics of our student population and community. Thus, promoting creativity and diversity.

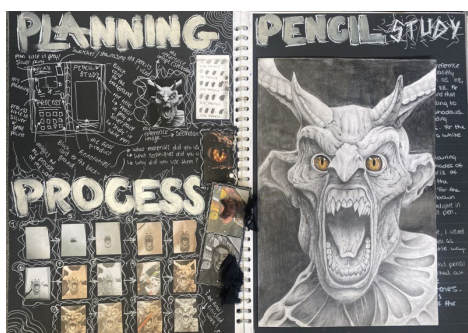


As students' progress through KS3, they develop a greater understanding of these disciplines and the world around them. KS4 students are trained to think critically, be creative, experimental and ambitious in their independent projects. A Level students are armed with the confidence and technical refinement necessary to further develop techniques and working practices. Promoting ambitious and highly individual outcomes.

Wider curricular activities, such as weekly enrichment sessions- therapeutic art; embroidery and crafts, exhibition and trips consolidate learning. Students from disadvantaged backgrounds are at the forefront of every activity we organise. This provides them with valuable exposure and the cultural capital, which minimises inequality and foster success.



In summary, critical thinking, self-reflection, creative development and the ability to evaluate artworks are used to enhance students' communication and interpersonal skills. They are taught to see challenges and mistakes as essential learning opportunities to build character, resilience and skill.



GCSE

Coursework - 60%
External Exam - 40%

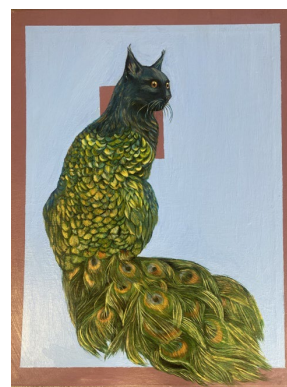
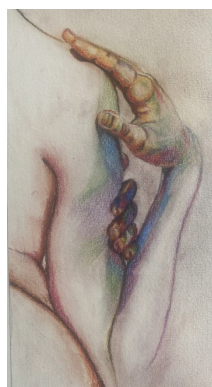
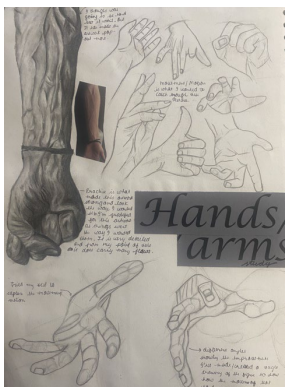
A Level

Coursework - A Level Unit 1 50%
3000-word essay within unit 1 - 12%
Exam - A Level Unit 2 50%

Curriculum Summary

Year	Autumn Term	Project
7	Autumn 1	Formal Elements of Art
	Autumn 2	Still life
8	Autumn 1	Insects
	Autumn 2	Insects - Pattern making and wallpaper design.
9	Autumn 1	Yayoi Kusama – Shape and pattern
	Autumn 2	Yayoi Kusama – Shape and pattern
10	Autumn 1 & 2	Natural Forms
11	Autumn 1 & 2	Distortion
12	Autumn 1 & 2	Light and Shadow Project
13	Autumn 1 & 2	Myth and Legends Project

Year	Spring Term	Project
7	Spring 1	Landscape: One-point – perspective
	Spring 2	Landscape
8	Spring 1	Portraiture: Proportion of the head, side view, front view
	Spring 2	Portraiture – Cubism / expressionism
9	Spring 1	Landscape
	Spring 2	Landscape
10	Spring 1 & 2	Land and Seascape
11	Spring 1 & 2	GCSE Final Exam
12	Spring 1 & 2	Light and Shadow
13	Spring 1 & 2	A Level Final Exam



Curriculum Summary



Year	Summer Term	Project
7	Summer 1	Pop Art
	Summer 2	Concept Art: Cartoon characters
8	Summer 1	Seascape
	Summer 2	Surrealism
9	Summer 1	African Art Patterns
	Summer 2	African Masks
10	Summer 1 & 2	Distortion Project
11	Summer 1 & 2	GCSE Final Exam
12	Summer 1 & 2	Myth and Legends
13	Summer 1 & 2	A Level Final Exam

