



# English

## KS3 Journey Plan

KS3

**KO 8 Sentence structures:** Can I use a range of sentence structures accurately, and often for purpose and effect?

**KO 9 Punctuation:** Can I use a range of ambitious punctuation accurately?

**KO 7 Paragraphs:** Can I organise my ideas into different paragraph lengths for effect, and accurately use a range of discourse markers to link my ideas?

**KO 5 Evaluate:** Can I write a developed and evaluative response to a statement based on a text?

Unseen Exploration of Poetry

Junior Journalists



**KO 2 Language:** Can I analyse language choices in detail, selecting a range of relevant quotations and regularly using key subject terminology?

**KO 11 Context:** Can I use context to interpret multiples meanings and the author's intent of a text and include this in my analysis?

**KO 3 Structure:** Can I explain the effects of a range of structural features in detail, selecting relevant quotations and regularly using key subject terminology?

An Introduction to Literary Criticism



The Merchant of Venice

Animal Farm



YEAR 9

**KO 4 Compare:** Can I make comparisons between attitudes, ideas and perspectives in a text?

Poetry Through Time

**KO 3 Structure:** Can I clearly explain the impact of structural features in a text using subject terminology?

**KO 9 Punctuation:** Can I use ambitious punctuation in my writing accurately?

**KO 2 Language:** Can I explain the effect of language features in detail?

**KO 5 Evaluate:** Can I make a clear evaluative comment on a text?

**KO 6 Techniques:** Can I use effective language and techniques to suit form and purpose?



**KO 1 Infer:** Can I make detailed inferences from a text?

Oliver Twist

Powerful Short Stories

**KO 7 Paragraphs:** Can I organise my ideas into clear paragraphs and start my sentences with discourse markers?

**KO 11 Context:** Can I make comments on the implicit effect that the reader or writer's context has on the meaning of a text?



**KO 8 Sentences:** Can I use a range of sentences in my writing?

Romeo and Juliet

YEAR 8

**KO 12 Oracy:** Can I listen actively and express a point of view in full sentences?

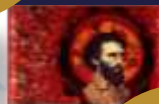
**KO 5 Evaluate:** Can I make a clear evaluative comment on a text?

Doctor Faustus

Poetry: An Exploration of Culture and Creative Writing

**KO 2 Language:** Can I explain the effect of language features in detail?

**KO 4 Compare:** Can I make comparisons between attitudes, and I can identify different ideas and perspectives?



**KO 6 Techniques:** Can I use effective language and techniques to suit form and purpose?

Ghost Boys

Arctic Explorers and adventure fiction

YEAR 7



**KO 8 Sentences:** Can I use a range of sentences accurately?

**KO 2 Language:** Can I explain the effect of language features in detail?

**KO 1 Infer:** Can I make detailed inferences from a text?

**KO 3 Structure:** Can I explain the effect of structural features in detail?





# English KS4 Journey Plan

KS5



PPE3

PPE2

AO1, AO2 & AO3  
Can I explore Priestley's ideas, purpose and how he conveys his didactic message considering the context during which the play was written and first performed?

AO1, AO2 & AO3  
Can I explore Dickens' ideas, purpose and how he conveys his didactic message considering the context of the Victorian era?

YEAR  
11

Charles Dickens' *A Christmas Carol*



J. B. Priestley's *An Inspector Calls*



AO7 - Can I present in a formal setting?  
AO8 - Can I listen and respond appropriately and thoughtfully?  
AO9 - Can I use spoken language effectively in speeches and presentations?

Unseen Poetry  
AO1, AO2  
Can I offer a personal response to texts supported by evidence?  
Can I analyse the writer's use of poetic devices including form, structure and language?

Spoken Language Endorsement

PPE1

Language Paper 2:  
AO1 & AO2  
AO3 - Can I compare the writer's viewpoints and perspectives and how they are conveyed?

Language Paper 2:  
AO5 & AO6:  
Can I communicate effectively and adapt, form, structure and language to suit the intended audience?

Language Paper 2:  
Section B

Unseen Poetry



Language Paper 2:  
Section A

P&C: AO1, AO2, AO3 - Can I thoughtfully compare the writer's ideas, methods, purposes and the contexts that have inspired their work?

Power & Conflict Poetry

AO1 - Can I infer from the text and support with evidence?

AO2- Can I analyse how the writer's structure and language create effect for the reader?

AO4 - Can I evaluate texts critically and support with appropriate evidence?

AO6 - Can I use punctuation and effective punctuation for effect?

AO5 - Can I write stories and descriptions effectively using figurative and linguistic devices?



Language Paper 1:  
Section B

Language Paper 1:  
Section A



William Shakespeare's *Macbeth*

YEAR  
10



AO2 - Can I analyse how Shakespeare used form, structure and language to achieve his purpose?

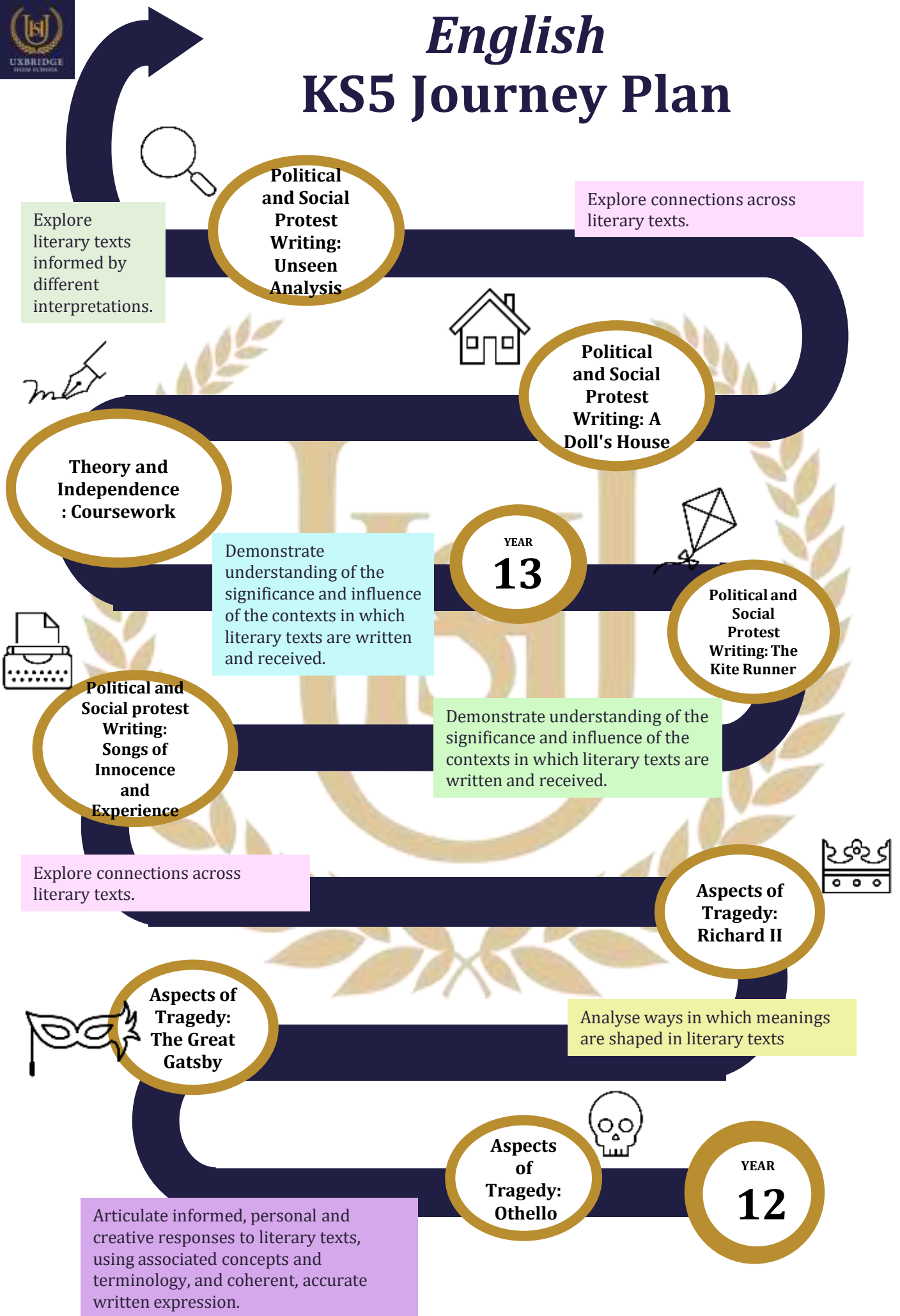
AO3 - Can I link thoughtfully link Shakespeare's choices to the beliefs and ideas prevalent in the Jacobean era?

AO1 - Can I clearly communicate what Shakespeare intended to achieve using events and characters in the play?



# English

## KS5 Journey Plan



**Political and Social Protest Writing: Unseen Analysis**

Explore literary texts informed by different interpretations.

Explore connections across literary texts.

**Political and Social Protest Writing: A Doll's House**



Demonstrate understanding of the significance and influence of the contexts in which literary texts are written and received.

YEAR  
**13**

**Political and Social Protest Writing: The Kite Runner**



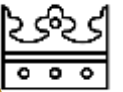
Demonstrate understanding of the significance and influence of the contexts in which literary texts are written and received.

**Political and Social protest Writing: Songs of Innocence and Experience**



Explore connections across literary texts.

**Aspects of Tragedy: Richard II**



Analyse ways in which meanings are shaped in literary texts

**Aspects of Tragedy: The Great Gatsby**



Articulate informed, personal and creative responses to literary texts, using associated concepts and terminology, and coherent, accurate written expression.

**Aspects of Tragedy: Othello**



YEAR  
**12**